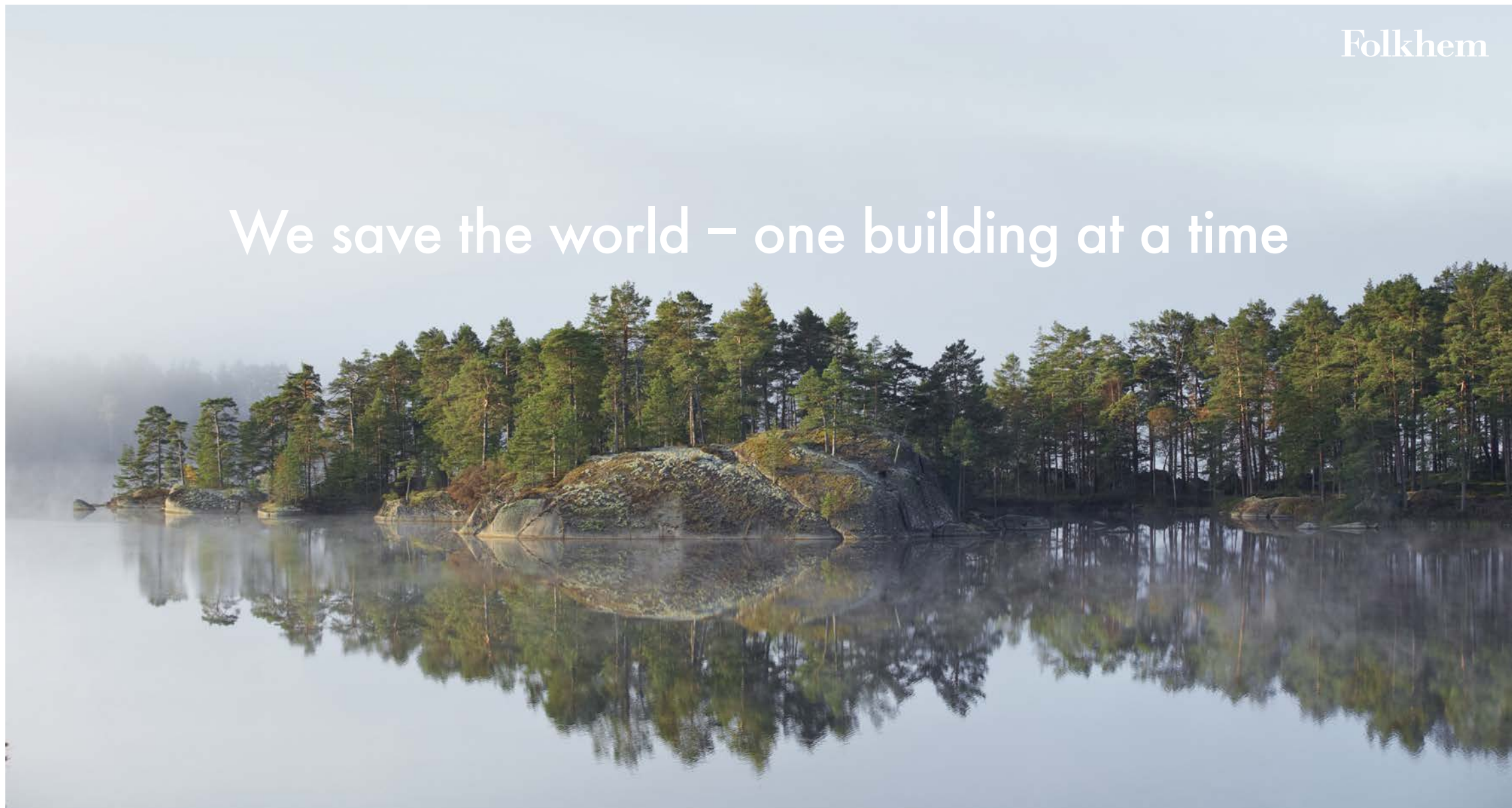


Folkhem

Welcome  
to the world of  
Folkhem

We save the world – one building at a time





5 000 B.C – Sumerian Civilisations  
1 000 B.C – Zhou Dynasty China  
900 A.D – Copán Maya  
800 A.D – Tikal Maya  
500 A.D – Roman Empire  
2000 A.D...?

Today, we use resources corresponding  
to four planets yearly



Producing



Consuming

Folkhem





Finite



Forever

Folkhem

Carbon sinks are natural systems  
that grab and store carbon dioxide from  
the atmosphere to use in photosynthesis

The main natural carbon sinks are plants,  
the ocean and soil...



Building and  
transport,  
emissions  
under construction

80%  $\text{CO}_2$

Folkhem



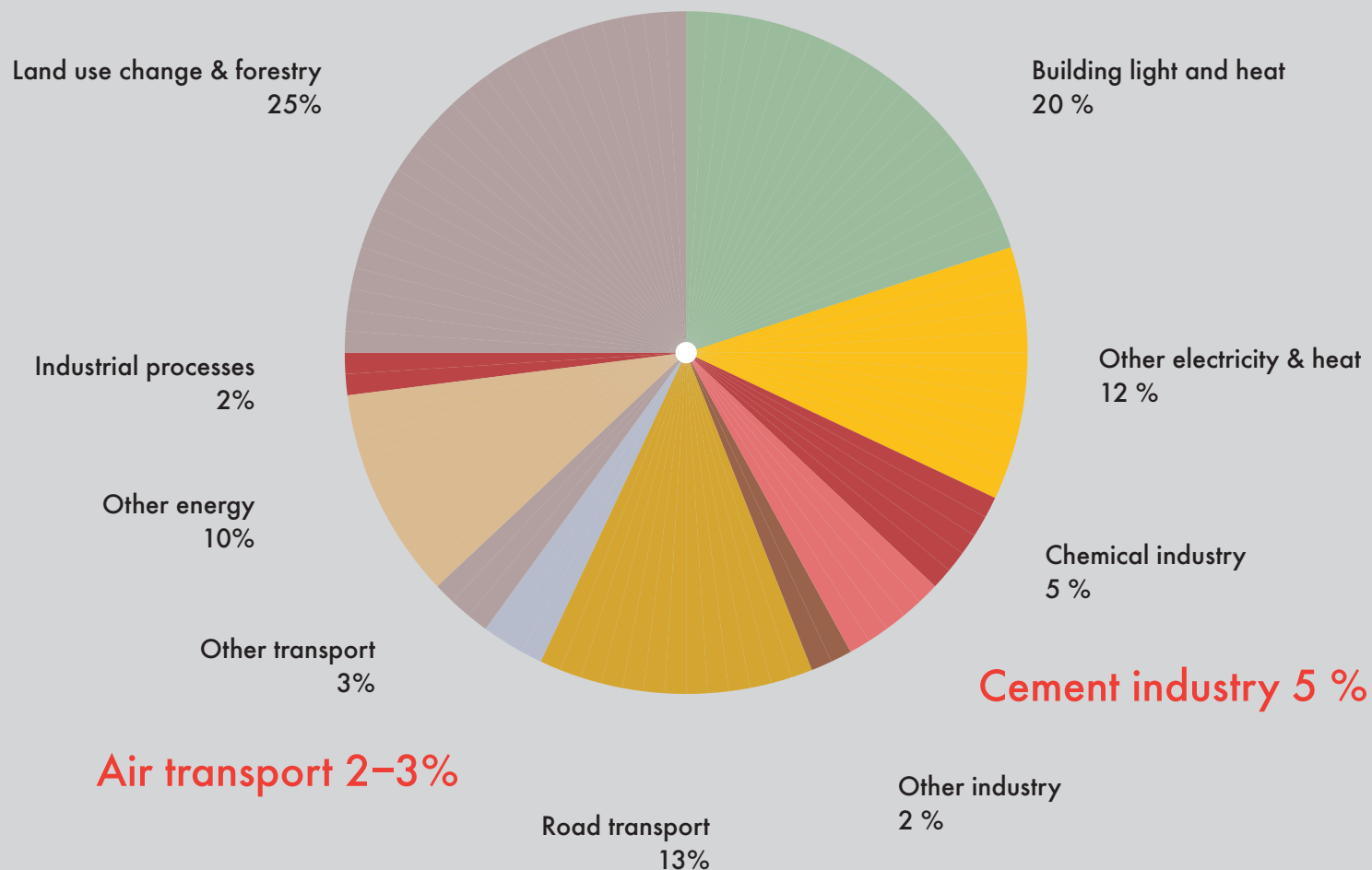
Heating and  
living,  
emissions  
under a lifetime

20%  $\text{CO}_2$

\*Source: IPCC

Folkhem

# Global CO<sub>2</sub> emissions\*



Worldwide,  
the building  
industry is responsible  
for about 50%  
of CO<sub>2</sub> emissions

Folkhem

# Sustainable Forestry



# Sustainable society

The city of the future has to contain all aspects of life in a sustainable way.



# Sky News London: 12 months from start of design to inauguration party.



Dalston Lane, London, 25.000m<sup>2</sup> living  
space built totaly in wood.



Folkhem

# Why build out of wood?



Renewable resource

Low density

More manageable

Low power consumption during production

Less emissions from transport

90% reduced  $\text{CO}_2$ -emissions during construction

Works as carbon-sinks

Decreased staff

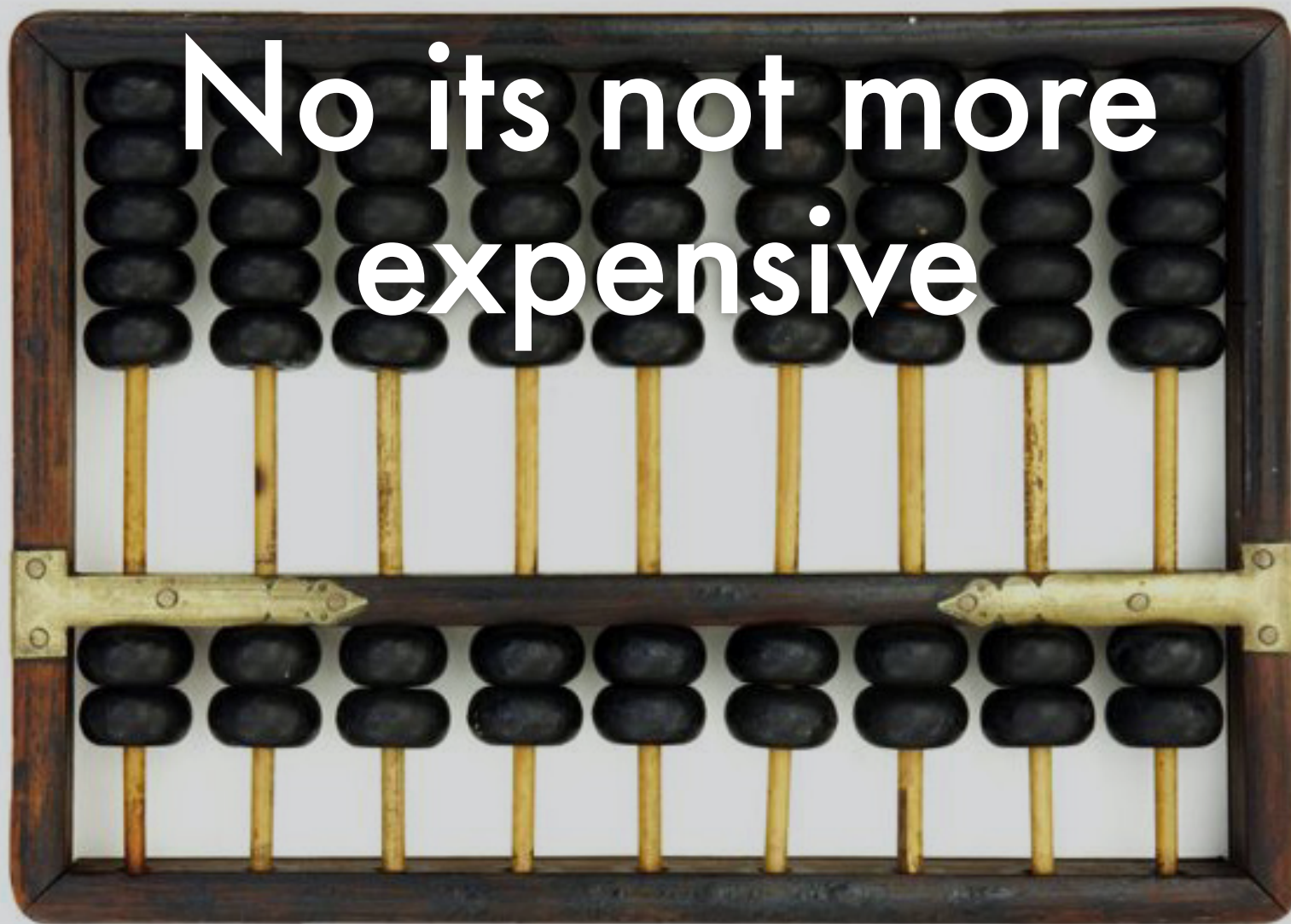
Work environment – less noise, less dust

Silent and clean construction sites

No drying time – fast occupancy

Up to 70% faster construction

No its not more  
expensive



The most famous historical wooden building in Sweden. It might be the largest in the world.

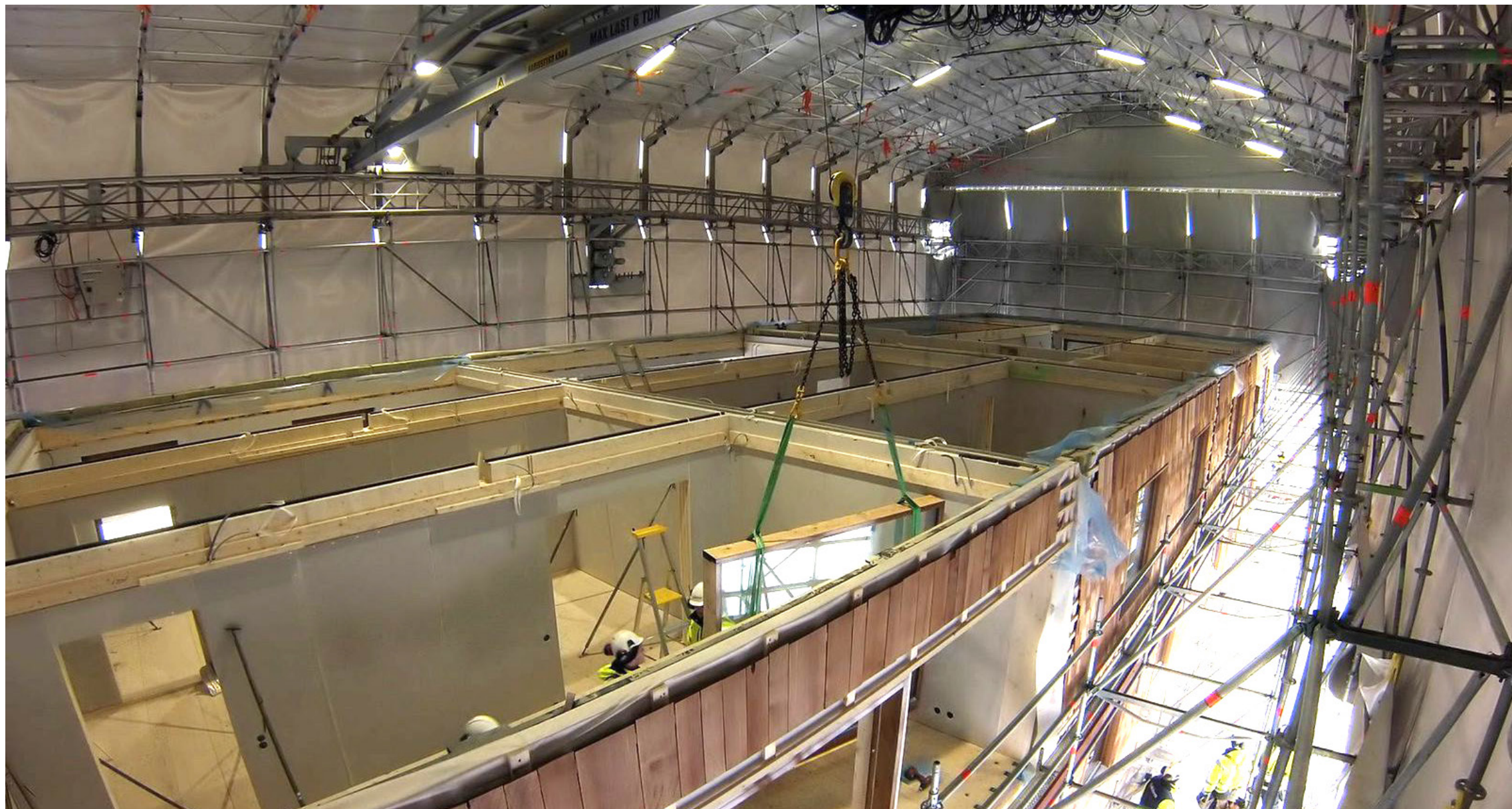


A low-angle photograph of a modern building with a wooden shingle facade and large windows. The building is viewed from below, looking up at the corner where two facades meet. The windows are rectangular and arranged in a grid-like pattern. The sky is a pale, overcast grey.

Folkhem

# Strandparken, 8 stories

Strandparken is  
produced by swedish  
forests in one single  
minute







A minimalist interior space with light wood walls, a dark floor, a wooden bench, a potted plant, and a large window with a frosted glass panel. The text "Different scent" is overlaid in the center.

# Different scent



Different feeling



Different looks

**"Our son, Aldo, suffers from asthma.  
Since we moved in to Strandparken he's  
free from symptoms"**

Carina Sule, Hamngatan 15 A Sundbyberg



A landscape photograph featuring a calm body of water, possibly a lake or a wide river, under a hazy, misty sky. In the foreground, there is a dense field of green, leafy vegetation, likely a wetland or marsh. Two prominent, weathered, and bleached tree trunks stand in the foreground, one on the left and one on the right. The middle ground shows the water reflecting the light, with some lily pads visible. In the background, a dense forest of tall, thin trees is visible through the mist. The overall atmosphere is serene and quiet.

# Folkhem projects

An architectural rendering of a modern, multi-story building with a warm, reddish-brown brick facade. The building features a grid of windows and several balconies, some of which have small plants or people on them. The ground floor has large glass windows and doors, with a sign that reads "MAX & CO". In front of the building is a paved courtyard area with a small fountain that has several water jets. There are trees and greenery around the courtyard, and several people are walking and cycling in the scene. The overall atmosphere is bright and sunny.

Folkhem

Hagastaden/General Architecture



Tengdahlsgatan/Utopia Arkitekter



Klockelund/In Praise of Shadows



Skinnarviksberget/Petra Gipp Arkitektur



Awarded best residential WAN

Stadshagen/Petra Gipp Architektur



Nytorget/Petra Gipp Arkitektur



Hallonbergen/Carmen Izquierdo



Stora Essingen/Jägnefält Milton



Hallonporten/Wingårdhs Arkitekter



Loudden/Tham Videgård

A black and white photograph of a person's open palm held against a blurred background of soil and small plants. The palm is holding a collection of small, dark, round seeds that are arranged into a heart shape. The person's fingers are slightly spread, and a simple ring is visible on the ring finger. The lighting is soft, highlighting the texture of the skin and the individual seeds.

# This is all you need

(You can't grow concrete and steel)

A wide-angle landscape photograph showing a calm body of water reflecting a dense forest of tall, thin trees on a rocky island. The sky is a pale, hazy blue. The word "Folkhem" is centered in a white, classic serif font.

# Folkhem